

## TECHNICAL DATA

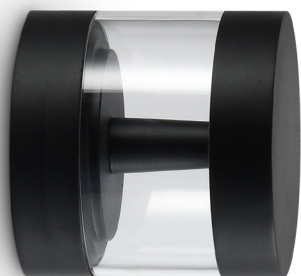
## TYPE

Professional LED for Public Lighting.

## APPLICATIONS

Can be used in:

- Urban and residential areas.
- Parks and green spaces.
- Maritime promenades.
- Pedestrian areas.
- Cycle lanes and <30km/h areas.



PRO

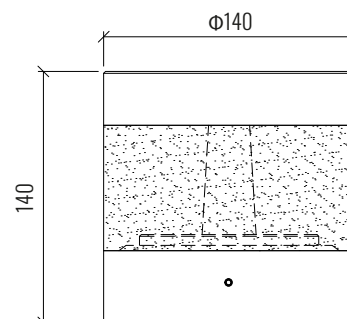
CRI ≥ 80

AC100-277V  
50/60Hz

3 Years

## DIMENSION DRAW

Model:	Tonda Wall
Format:	Round
Location:	Exterior
Wattage:	10W
Materials:	Aluminum
Led Color:	3000K / 4000K / 6500K
Product Dimension:	Φ140*H140mm
IP Code:	65
Fixation:	Ground
CRI :	80
Lumen Output:	283.1 LM
Frequency:	50/60 Hz



OUTDOOR